



Western Cape Government • Wes-Kaapse Regering • URhulumente weNtshona Koloni

PROVINCE OF THE WESTERN CAPE

PROVINSIE WES-KAAP

IPHONDO LENTSHONA KOLONI

**Provincial Gazette
Extraordinary**

**Buitengewone
Provinsiale Koerant**

**Isongezelelo
kwiGazethi yePhondo**

8535

8535

8535

Friday, 21 January 2022

Vrydag, 21 Januarie 2022

uLwesihlanu, 21 kweyoMqungu 2022

Registered at the Post Office as a Newspaper

As 'n Nuusblad by die Poskantoor Geregistreer

Ibhaliswe ePosini njengePhephandaba

CONTENTS

INHOUD

IZIQUATHO

(*Copies are obtainable at Room M21, Provincial Legislature Building, 7 Wale Street, Cape Town 8001.)

(*Afskrifte is verkrygbaar by Kamer M21, Provinsiale Wetgewer-gebou, Waalstraat 7, Kaapstad 8001.)

(*Iikopi zifumaneka kwigumbi M21, kwiSakhiwo seNdlu yoWiso Mithetho yePhondo, e7 Wale Street, eKapa 8001.)

Provincial Notice

Provinsiale Kennisgewing

ISaziso sePhondo

The following Provincial Notice is published for comment:

Die volgende Provinsiale Kennisgewing word vir kommentaar gepubliseer:

Esi saziso silandelayo sipapashelwe ukunika izimvo:

4 Department of Environmental Affairs and Development Planning: Nature Conservation Ordinance, 1974 (Ordinance 19 of 1974): Notice of Intention to Abolish Driftsands Nature Reserve 2

4 Departement van Omgewingsake en Ontwikkelingsbeplanning: Ordonnansie op Natuurbewaring, 1974 (Ordonnansie 19 van 1974): Kennisgewing van Voorneme om Driftsands Natuureservaat af te Skaf 3

4 ISebe leMicimbi yokuSingqongileyo noCwanciso loPhuhliso: i-Nature Conservation Ordinance, 1974 (UMthetho woLondolozo ndalo 19 ka-1974): ISaziso seNjongo yokuBhangisa iNdawo yoLondolozo Ndalo iDriftsands 5

PROVINCIAL NOTICE

The following Provincial Notice is published for comment.

DR H.C. MALILA,
DIRECTOR-GENERAL

Provincial Legislature Building,
Wale Street,
Cape Town.

PROVINSIALE KENNISGEWING

Die volgende Provinsiale Kennisgewing word vir kommentaar gepubliseer.

DR H.C. MALILA,
DIREKTEUR-GENERAAL

Provinsiale Wetgewer-gebou,
Waalstraat,
Kaapstad.

ISAZISO SEPHONDO

Esi saziso silandelayo sipapashelwe ukunika izimvo.

GQIR H.C. MALILA,
MLAWULI-JIKELELE

ISakhiwo sePhondo,
Wale Street,
eKapa.

PROVINCIAL NOTICE

P.N. 4/2022

21 January 2022

DEPARTMENT OF ENVIRONMENTAL AFFAIRS AND DEVELOPMENT PLANNING**NATURE CONSERVATION ORDINANCE, 1974 (ORDINANCE 19 OF 1974)****NOTICE OF INTENTION TO ABOLISH DRIFTSANDS NATURE RESERVE**

1. The Provincial Minister of Local Government, Environmental Affairs and Development Planning in the Western Cape gives notice of the intention to abolish the Driftsands Nature Reserve under section 6(1)(d) of the Nature Conservation Ordinance, 1974 (Ordinance 19 of 1974) (the Ordinance). The Driftsands Nature Reserve is comprised of the following properties:
 - (a) Portion 83 (a portion of Portion 1) of the Farm Drift Sands No. 544, situated in the Administrative District of Cape Province, Western Cape;

In extent: 39, 4892 (Thirty-Nine comma Four Eight Nine Two) hectares;

Unregistered state land owned by the Western Cape Provincial Government;
 - (b) Portion 84 (a portion of Portion 1) of the Farm Drift Sands No. 544, situated in the Administrative District of Cape Province, Western Cape;

In extent: 14, 2917 (Fourteen comma Two Nine One Seven) hectares;

Unregistered state land owned by the Western Cape Provincial Government;
 - (c) Portion 85 (a portion of Portion 1) of the Farm Drift Sands No. 544, situated in the Administrative District of Cape Province, Western Cape;

In extent: 7, 1974 (Seven comma One Nine Seven Four) hectares;

Unregistered state land owned by the Western Cape Provincial Government;
 - (d) Farm No. 1548, situated in the Administrative District of Cape Province, Western Cape;

In extent: 8923 (Eight Thousand Nine Hundred and Twenty-Three) square metres;

Unregistered state land owned by the Republic of South Africa;
 - (e) Portion 87 (a portion of Portion 1) of the Farm Drift Sands No. 544, situated in the Administrative District of Cape Province, Western Cape;

In extent: 1, 3752 (One comma Three Seven Five Two) hectares;

Unregistered state land owned by the Western Cape Provincial Government;
 - (f) Farm No. 1549, situated in the Administrative District of Cape Province, Western Cape;

In extent: 2, 2675 (Two comma Two Six Seven Five) hectares;

Unregistered state land comprising Farm No. 1548 and Portion 87 (a portion of Portion 1) of the Farm Drift Sands No. 544;
 - (g) Portion 1 of the Farm Drift Sands No. 544, situated in the Administrative District of Cape Province, Western Cape;

In extent: 736, 8596 (Seven Hundred and Thirty-Six comma Eight Five Nine Six) hectares;

Held by Title Deed No. G224/1972;

The property is owned by Western Cape Provincial Government;
 - (h) Portion 61 (a portion of Portion 1) of the Farm Drift Sands No. 544, situated in the Administrative District of Cape Province, Western Cape;

In extent: 21, 6399 (Twenty-One comma Six Three Nine Nine) hectares;

Held by Title Deed No. T68969/1996;

The property is owned by the Medical Research Council (MRC); and
 - (i) Portion 64 (a portion of Portion 1) of the Farm Drift Sands No. 544, comprising—
 - (i) Erf 1847 Mfuleni, situated in Tygerberg City, Administrative District of Cape Province, Western Cape;

In extent: 10,5533 (Ten comma Five Five Three Three) hectares;

Held by Title Deed No. T5635/99;

The property is owned by the City of Cape Town; and

- (ii) Erf 2091 Mfuleni, situated in Tygerberg City, Administrative District of Cape Province, Western Cape;
 In extent: 9,3291 (Nine comma Three Two Nine One) hectares;
 Held by Title Deed No. T5635/99;
 The property is owned by the City of Cape Town.
2. The Driftsands Nature Reserve is situated on the Cape Flats, approximately 25 km east of Cape Town on the National Route 2. The nature reserve is situated adjacent to the MRC in Delft and is bounded by highways and human settlement on all sides. The Driftsands Nature Reserve is bound in the northwest by the R300 and the National Route 2 and in the south by Old Faure Road. The northern boundary is bordered by private landowners, while the eastern boundary is formed by Mfuleni Township. The nature reserve falls within the City of Cape Town Metropolitan Municipality.
3. The property boundaries of the Driftsands Nature Reserve are reflected on Surveyor-General diagrams 2101/2014, 2102/2014, 2103/2014, 2104/2014, 2105/2014, 2106/2014, 4251/91, 2042/94, 8168/70, 2043/94 and 11150/1995, as set out in the Schedule, and may also be viewed at <https://www.capenature.co.za/care-for-nature/stewardship/>.
4. The Driftsands Nature Reserve was established as a provincial nature reserve under section 6(1) of the Ordinance by Proclamation 192/1983 published in *The Province of the Cape of Good Hope Official Gazette* 4276 dated 22 July 1983. Since 2004 the Driftsands Nature Reserve has been subject to encroachment by informal settlements. In 2020 the nature reserve was further severely impacted by an influx of people into the nature reserve. Despite measures taken by the Western Cape Government and other stakeholders to protect and maintain the land, and prevent the unlawful occupation, the natural environment inside the reserve has been and continues to be irrevocably transformed and the ecological impact in the occupied areas is irreversible. Large areas of the nature reserve have been irreparably damaged as a result of the unlawful occupation and have lost their biodiversity value. It is expected that the land will continue to deteriorate, given the rate at which the natural environment has been transformed to date. The abolition of the Driftsands Nature Reserve will enable other land use options to be formally considered. A consequence of abolishing the Driftsands Nature Reserve is that the assignment of CapeNature as the management authority of Driftsands Nature Reserve under section 38(2) of the National Environmental Management: Protected Areas Act, 2003 (Act 57 of 2003), published under Provincial Notice 237/2016 in *Provincial Gazette* 7628 dated 10 June 2016, is relinquished.
5. Members of the public are requested to submit written representations on or objections to the proposed abolition of the Driftsands Nature Reserve within 60 days from the date of publication of this notice by—
- (i) posting the representations or objections to:
 The Chief Executive Officer
 Attention: Ms. T. Paleker
 CapeNature
 Private Bag X29
 Gatesville 7766;
- (ii) emailing the representations or objections to:
 tpaleker@capenature.co.za; or
- (iii) delivering the representations or objections to:
 The Chief Executive Officer
 Attention: Ms. T. Paleker
 CapeNature
 Cnr Bosduif and Volstruis Streets
 Bridgetown
 Athlone 7764.
6. Comments received after the closing date may be disregarded.
7. Queries can be made to Ms. T. Paleker at telephone no. 087 087 3208 or by email to tpaleker@capenature.co.za.

PROVINSIALE KENNISGEWING

P.K. 4/2022

21 Januarie 2022

DEPARTEMENT VAN OMGEWINGSAKE EN ONTWIKKELINGSBEPLANNING

ORDONNANSIE OP NATUURBEWARING, 1974 (ORDONNANSIE 19 VAN 1974)

KENNISGEWING VAN VOORNEME OM DRIFTSANDS NATUURRESERVAAT AF TE SKAF

1. Die Provinsiale Minister van Plaaslike Regering, Omgewingsake en Ontwikkelingsbeplanning in die Wes-Kaap gee kennis van die voorneme om kragtens artikel 6(1)(d) van die Ordonnansie op Natuurbeewaring, 1974 (Ordonnansie 19 van 1974) (die Ordonnansie) die Driftsands Natuurreservaat af te skaf. Die Driftsands Natuurreservaat bestaan uit die volgende eiendomme:
- (a) Gedeelte 83 (’n gedeelte van Gedeelte 1) van die Plaas Drift Sands Nr. 544, geleë in die Administratiewe Distrik van Kaapprovinsie, Wes-Kaap;
 Groot: 39, 4892 (Nege-en-Dertig komma Vier Ag Nege Twee) hektaar;
 Ongeregistreerde staatsgrond waarvan die Wes-Kaapse Provinsiale Regering die eienaar is;
- (b) Gedeelte 84 (’n gedeelte van Gedeelte 1) van die Plaas Drift Sands Nr. 544, geleë in die Administratiewe Distrik van Kaapprovinsie, Wes-Kaap;
 Groot: 14, 2917 (Veertien komma Twee Nege Een Sewe) hektaar;
 Ongeregistreerde staatsgrond waarvan die Wes-Kaapse Provinsiale Regering die eienaar is;
- (c) Gedeelte 85 (’n gedeelte van Gedeelte 1) van die Plaas Drift Sands Nr. 544, geleë in die Administratiewe Distrik van Kaapprovinsie, Wes-Kaap;
 Groot: 7, 1974 (Sewe komma Een Nege Sewe Vier) hektaar;

- Ongeregistreerde staatsgrond waarvan die Wes-Kaapse Provinsiale Regering die eienaar is;
- (d) Plaas Nr. 1548, geleë in die Administratiewe Distrik van Kaapprovinsie, Wes-Kaap;
Groot: 8923 (Agduisend Nege Honderd Drie-en-Twintig) vierkante meter;
Ongeregistreerde staatsgrond waarvan die Republiek van Suid-Afrika die eienaar is;
- (e) Gedeelte 87 (’n gedeelte van Gedeelte 1) van die Plaas Drift Sands Nr. 544, geleë in die Administratiewe Distrik van Kaapprovinsie, Wes-Kaap;
Groot: 1, 3752 (Een komma Drie Sewe Vyf Twee) hektaar;
Ongeregistreerde staatsgrond waarvan die Wes-Kaapse Provinsiale Regering die eienaar is;
- (f) Plaas Nr. 1549, geleë in die Administratiewe Distrik van Kaapprovinsie, Wes-Kaap;
Groot: 2, 2675 (Twee komma Twee Ses Sewe Vyf) hektaar;
Ongeregistreerde staatsgrond bestaande uit Plaas Nr. 1548 en Gedeelte 87 (’n gedeelte van Gedeelte 1) van die Plaas Drift Sands Nr. 544;
- (g) Gedeelte 1 van die Plaas Drift Sands Nr. 544, geleë in die Administratiewe Distrik van Kaapprovinsie, Wes-Kaap;
Groot: 736, 8596 (Sewehonderd Ses-en-Dertig komma Ag Vyf Nege Ses) hektaar;
Gehou kragtens Transportakte Nr. G224/1972;
Die Wes-Kaapse Provinsiale Regering is die eienaar van die eiendom.
- (h) Gedeelte 61 (’n gedeelte van Gedeelte 1) van die Plaas Drift Sands Nr. 544, geleë in die Administratiewe Distrik van Kaapprovinsie, Wes-Kaap;
Groot: 21, 6399 (Een-en-Twintig komma Ses Drie Nege Nege) hektaar;
Gehou kragtens Transportakte Nr. T68969/1996;
Die Mediese Navorsingsraad (MNR) is die eienaar van die eiendom; en
- (i) Gedeelte 64 (’n gedeelte van Gedeelte 1) van die Plaas Drift Sands Nr. 544, bestaande uit—
- (i) Erf 1847 Mfuleni, geleë in Tygerberg Stad, Administratiewe Distrik van Kaapprovinsie, Wes-Kaap;
Groot: 10,5533 (Tien komma Vyf Vyf Drie Drie) hektaar;
Gehou kragtens Transportakte Nr. T5635/99;
Die Stad Kaapstad is die eienaar van die eiendom; en
- (ii) Erf 2091 Mfuleni, geleë in Tygerberg Stad, Administratiewe Distrik van Kaapprovinsie, Wes-Kaap;
Groot: 9,3291 (Nege komma Drie Twee Nege Een) hektaar;
Gehou kragtens Transportakte Nr. T5635/99;
Die Stad Kaapstad is die eienaar van die eiendom.
2. Die Driftsands Natuureservaat is geleë op die Kaapse Vlakte, ongeveer 25 km oos van Kaapstad op die Nasionale Roete 2. Die natuureservaat grens aan die MNR in Delft en word aan alle kante deur hoofpaaie en menslike nedersettings begrens. Die Driftsands Natuureservaat word in die noordweste deur die R300 en die Nasionale Roete 2 en in die suide deur Ou Faure Pad begrens. Die noordelike grens word deur privaat grondeienaars begrens terwyl Mfuleni Township die oostelike grens uitmaak. Die natuureservaat is geleë binne die Stad Kaapstad Metropolitaanse Munisipaliteit.
3. Die grense van die Driftsands Natuureservaat word weergegee op Landmeter-generaaldigramme 2101/2014, 2102/2014, 2103/2014, 2104/2014, 2105/2014, 2106/2014, 4251/91, 2042/94, 8168/70, 2043/94 en 11150/1995 soos uiteengesit in die Bylae en kan ook by <https://www.capenature.co.za/care-for-nature/stewardship/> gevind word.
4. Die Driftsands Natuureservaat is by Proklamasie 192/1983, gepubliseer in *Offisiële Koerant van die Provinsie Die Kaap die Goeie Hoop* 4276 gedateer 22 Julie 1983, kragtens artikel 6(1) van die Ordonnansie as ’n provinsiale natuureservaat ingestel. Die Driftsands Natuureservaat is sedert 2004 onderhewig aan indringing deur informele nedersettings. In 2020 is die natuureservaat verder erg geraak deur ’n toevloed van mense na die natuureservaat. Ondanks maatreëls getref deur die Wes-Kaapse Regering en ander belanghebbers om die grond te beskerm en in stand te hou, en om die onregmatige besetting te voorkom, is en word die natuurlike omgewing in die reservaat onherroeplik getransformeer en is die ekologiese uitwerking van die besette gebiede onomkeerbaar. Groot gebiede van die natuureservaat is onherstelbaar beskadig as gevolg van die onregmatige besetting en het hul biodiversiteitswaarde verloor. Daar word verwag dat die grond sal aanhou agteruitgaan gegewe die koers waarteen die natuurlike omgewing tot op hede getransformeer is. Die afskaffing van die Driftsands Natuureservaat sal die formele oorweging van ander grondgebruikopsies moontlik maak. ’n Gevolg van die afskaffing van die Driftsands Natuureservaat is dat daar afstand gedoen sal word van die toewysing van CapeNature as die besturende owerheid van die Driftsands Natuureservaat ingevolge artikel 38(2) van die “National Environmental Management: Protected Areas Act, 2003” (Wet 57 van 2003), gepubliseer onder Provinsiale Kennisgewing 237/2016 in *Provinsiale Koerant* 7628 gedateer 10 Junie 2016.
5. Lede van die publiek word versoek om binne 60 dae vanaf die datum van publikasie van hierdie kennisgewing skriftelike vertoë of besware ten opsigte van die voorgestelde afskaffing van die Driftsands Natuureservaat in te dien deur—
- (i) die vertoë of besware per pos te stuur aan:
Die Hoof- Uitvoerende Beampte
Vir aandag: Me. T. Paleker
CapeNature
Privaat Sak X29
Gatesville 7766;

- (ii) die vertoë of besware te e-pos na:
tpaleker@capenature.co.za; of
- (iii) die vertoë of besware per hand af te lewer aan:
Die Hoof- Uitvoerende Beampte
Vir aandag: Me. T. Paleker
CapeNature
H/v Bosduif- en Volstruisstraat
Bridgetown
Athlone 7764.
6. Kommentaar wat ná die sperdatum ontvang word, sal moontlik nie oorweeg word nie.
7. Navrae kan telefonies gerig word aan me. T. Paleker by tel. 087 087 3208 of per e-pos na tpaleker@capenature.co.za.

ISAZISO SEPHONDO

I.S. 4/2022

21 kweyoMqungu 2022

ISEBE LEMICIMBI YOKUSINGQONGILEYO NOCWANGCISO LOPHUHLISO

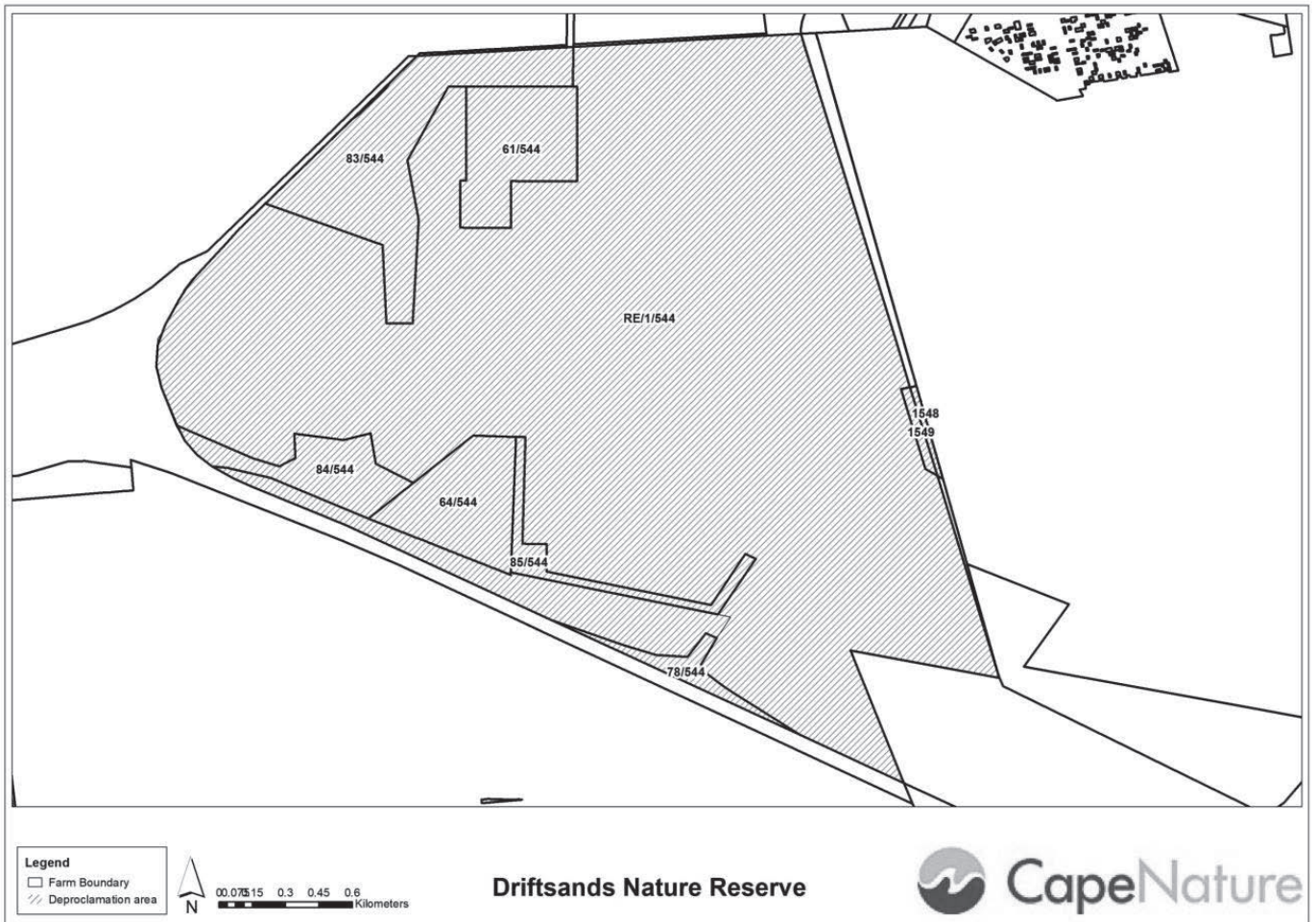
I-NATURE CONSERVATION ORDINANCE, 1974 (UMTHETHO WOLONDOLOZO NDALO 19 KA-1974)

ISAZISO SENJONGO YOKUBHANGISA INDAWO YOLONDOLOZO NDALO I-DRIFTSANDS

1. UMphathiswa wePhondo woRhulumente weNgingqi, iMicimbi yokuSingqongileyo noCwangciso loPhuhliso eNtshona Koloni unika isaziso senjongo yokubhangiswa kweNdawo yoLondolozo Ndalo iDriftsands phantsi kwecandelo 6(1)(d) lomthetho *iNature Conservation Ordinance, 1974* (uMthetho 19 ka-1974) (uMthetho). INdawo yoLondolozo Ndalo iDriftsands eyenziwa yile mhlaba ilandelayo.
- (a) INxalenye 83 (inxalenye yeNxalenye 1) yeFama iDrift Sands enguNombolo 544, emi kwiSithili soLawulo sePhondo laseKoloni, eNtshona Koloni;
Elinganiselwa kuma-39, 4892 (AmaShumi amaThathu aneThoba khoma isiNe isiBhozo iThoba isiBini) eehektare;
Umhlaba karhulumente ongabhaliswanga ophantsi koRhulumente wePhondo leNtshona Koloni;
- (b) INxalenye 84 (inxalenye yeNxalenye 1) yeFama iDrift Sands enguNombolo 544, emi kwiSithili soLawulo sePhondo laseKoloni, eNtshona Koloni;
Elinganiselwa kwi-14, 2917 (IShumi elineSine khoma isiBini iThoba isiNye isiXhenxe) eehektare;
Umhlaba karhulumente ongabhaliswanga ophantsi koRhulumente wePhondo leNtshona Koloni;
- (c) INxalenye 85 (inxalenye yeNxalenye 1) yeFama iDrift Sands enguNombolo 544, emi kwiSithili soLawulo lwePhondo laseKapa, eNtshona Koloni;
Elinganiselwa kwi-7, 1974 (IsiXhenxe khoma isiNye iThoba isiXhenxe isiNe) eehektare;
Umhlaba karhulumente ongabhaliswanga ophantsi koRhulumente wePhondo leNtshona Koloni;
- (d) IFama enguNombolo 1548, emi kwiSithili soLawulo lwePhondo laseKapa, eNtshona Koloni;
Elinganiselwa kuma-8923 (AmaWaka asiBhozo amaKhulu aliThoba namaShumi amaBini anesiThathu) eemitha zesikwere;
Umhlaba karhulumente ongabhaliswanga ophantsi kweRiphabliki yoMzantsi Afrika;
- (e) INxalenye 87 (inxalenye yeNxalenye 1) yeFama iDrift Sands enguNombolo 544, emi kwiSithili soLawulo lwePhondo laseKapa, eNtshona Koloni;
Elinganiselwa kwi-1, 3752 (IsiNye khoma isiThathu isiXhenxe isiHlanu isiBini) eehektare;
Umhlaba karhulumente ongabhaliswanga ophantsi koRhulumente wePhondo leNtshona Koloni;
- (f) IFama enguNombolo 1549, emi kwiSithili soLawulo lwePhondo laseKapa, eNtshona Koloni;
Elinganiselwa kwi-2, 2675 (IsiBini khoma isiBini isiThandathu isiXhenxe isiHlanu) eehektare;
Umhlaba karhulumente ongabhaliswanga owenziwa yiFama enguNombolo 1548 neNxalenye 87 (inxalenye yeNxalenye 1) yeFama iDrift Sands enguNombolo 544;
- (g) Nxalenye yoku-1 yeFama iDrift Sands enguNombolo 544, emi kwiSithili soLawulo lwePhondo laseKapa, eNtshona Koloni;
Elinganiselwa kuma-736,8596 (AmaKhulu asiXhenxe namaShumi amaThathu anesiThandathu khoma isiBhozo isiHlanu iThoba isiThandathu) eehektare;
Ephantsi kweSiqinisekiso soNikezelo loMhlaba esinguNombolo G224/1972;
Lo mhlaba uphantsi koRhulumente wePhondo leNtshona Koloni;
- (h) INxalenye 61 (inxalenye yeNxalenye 1) yeFama iDrift Sands enguNombolo 544, emi kwiSithili soLawulo lwePhondo laseKoloni, eNtshona Koloni;
Elinganiselwa kuma-21, 6399 (AmaShumi amaBini anaNye khoma isiThandathu isiThathu iThoba iThoba) eehektare;
Ephantsi kweSiqinisekiso soNikezelo loMhlaba esinguNombolo T68969/1996;
Lo mhlaba uphantsi kweZiko loPhando lwezoNyango (i-MRC); kwaye

- (i) YiNxalenye 64 (inxalenye yeNxalenye 1) yeFama iDrift Sands enguNombolo 544, eyenziwa—
- (i) SiSiza 1847 eMfuleni, esimi kwiSixeko saseTygerberg, kwiSithili soLawulo sePhondo laseKapa, eNtshona Koloni;
Elinganiselwa: 10,5533 (IShumi khoma isiHlanu isiHlanu isiThathu isiThathu) seehektare;
Ephantsi kweSiqinisekiso soNikezelo loMhlaba esinguNombolo T5635/99;
Lo mhlaba uphantsi kweSixeko saseKapa; kunye
- (ii) NeSiza 2091 eMfuleni, kwiSixeko saseTygerberg, kwiSithili soLawulo sePhondo laseKapa, eNtshona Koloni;
Elinganiselwa: 9,3291 (IsiThoba khoma isiThathu isiBini isiThoba isiNye) seehektare;
Ephantsi kweSiqinisekiso soNikezelo loMhlaba esinguNombolo T5635/99;
Lo mhlaba uphantsi kweSixeko saseKapa.
2. INdawo yoLondolozo Ndalo iDriftsands ekwiCape Flats, malunga neekhilomitha ezingama-25 kwimpuma yeDolophu yaseKapa kwiNdlela kaZwelonke 2. Le ndawo yolondolozo ndalo imi kufuphi neMRC eDelft kwaye ingqongwe ngoohola beendlela neendawo ezihlala abantu macala onke. INdawo yoLondolozo Ndalo iDriftsands ingqongwe kumntlantshona yiNdlela kaZwelonke enguR300 kunye neNdlela kaZwelonke 2 ize ibe yiOld Faure kumazantsi. Umda osemantla ubiyelwe ngabaninimhlaba babucala, ngeli lixa umda osepumpa usekwe yiLokishi iMfuleni. Le ndawo yolondolozo ndalo iphantsi koMasipala oMbhaxa weSixeko saseKapa.
3. Imida yeNdawo yoLondolozo Ndalo iDriftsands ikhonjiswe kwimizobo kaNocanda-Jikelele 2101/2014, 2102/2014, 2103/2014, 2104/2014, 2105/2014, 2106/2014, 4251/91, 2042/94, 8168/70, 2043/94 nowe-11150/1995, njengoko kubekiwe kwiShedyuli, kwaye inokujongwa kanaanjalo ku-<https://www.capenature.co.za/care-for-nature/stewardship/>.
4. INdawo yoLondolozo Ndalo iDriftsands yasekwa njengendawo yolondolozo ndalo yephondo phantsi kwecandelo 6(1) lomThetho sisiBhengezo esiyiNombolo 192/1983 esapapashwa kwiGazethi i-The Province of the Cape of Good Hope Official Gazette yomhla wama-22 Julayi 1983. Ukusukela ngo-2004 kuye kwangena amatyotyombe kule Ndawo yoLondolozo Ndalo iDriftsands. Ngo-2020 indawo yolondolozo ndalo iye yaphenjelelwa ngamandla ngokungaphaya luthontelwano lwabantu kwindawo le yolondolozo ndalo. Nangaphandle kwamanyathelo athathwe nguRhulumente waseNtshona Koloni kunye nabanye asebenzisana nabo ukukhusela kunye nokugcina umhlaba lo, kunye nokuthintela ukuhlala kuwo ngokungekho mthethweni, okusingqongileyo kwendalo kuyaqhuba kutshintshwa ngokungenakuguqulwa ngaphakathi kwindawo yolondolozo ndalo kwaye iimpembelelo kwindalo kwimimandla ekuhlalwa kuyo azinakuguqulwa. Imimandla emikhulu yendawo yolondolozo ndalo yonakaliswe ngokungenakulungiseka ngenxa yokuhlaliwa ngokungekho mthethweni kwaye iphulukene nexabiso layo lokuba neentlobo zezilwanyana nezityalo ezahlukeneyo. Kulindelwe ukuba umhlaba lo uza kuqhuba usehla, ngenxa yezinga elo okusingqongileyo kwendalo kutshintshe ngalo ukuza kuthi ga ngoku. Ukubhangiswa kweNdawo yoLondolozo Ndalo iDriftsands kuza kwenza ukuba kuthathelwe ingqalelo ngokusesikweni ezinye iindlela zokusetyenziswa komhlaba lo. Isiphumo sokubhangisa iNdawo yoLondolozo iDriftsands kukuba ukunikwa kweCapeNature njengogunyaziwe ophetheyo weNdawo yoLondolozo Ndalo weDriftsands phantsi kwecandelo 38(2) loMthetho Wokulondolozwa Kwendalo Yesiwe: Umthetho Weendawo Zolondolozo Ezikhuselweyo, ka-2003 (uMthetho 57 ka-2003), ngeSaziso sePhondo 237/2016 esipapashwe kwiGazethi yePhondo 7628 yomhla we-10 Juni 2016 kuyaphela.
5. Amalungu oluntu ayacelwa ukuba angenise iziphakamiso okanye inkcaso ebhaliweyo ngokubhangiswa okucetywayo kweNdawo yoLondolozo Ndalo iDriftsands kwiintsuku ezingama-60 ukusukela kumhla wokupapashwa kwesi saziso ngu—
- (i) kuposela iziphakamiso okanye inkcaso ku:
IGosa eliyiNtloko leSigqeba
Ingqalelo: kuNks. T. Paleker
CapeNature
Private Bag X29
Gatesville 7766;
- (ii) thumela ngeimeyile iziphakamiso okanye inkcaso ku:
tpaleker@capenature.co.za; okanye
- (iii) zisa iziphakamiso okanye inkcaso ku:
IGosa eliyiNtloko leSigqeba
Ingqalelo: kuNks. T. Paleker
CapeNature
Cnr Bosduif and Volstruis Streets
Bridgetown
Athlone 7764.
6. Izimvo ezifunyenwe emva komhla wokuvala zinokungasiwa so.
7. Imibuzo inokusiwa kuNks. T. Paleker kwinqanaba engu-087 087 3208 okanye ngeimeyile ku-tpaleker@capenature.co.za.

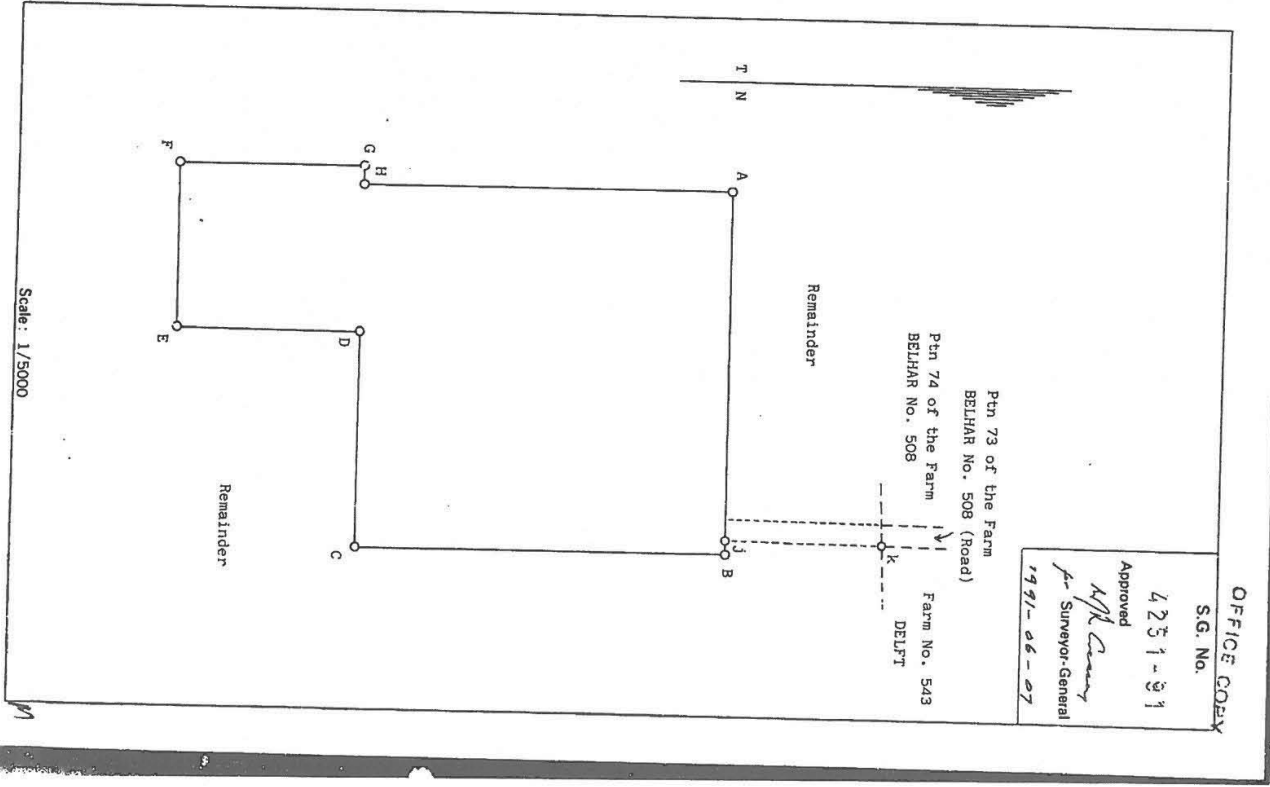
SCHEDULE/BYLAE/ISHEDYULI



4.251-01

SIDES Metres	ANGLES OF DIRECTION	CO-ORDINATES System Lo 19 ^u			
		Y	X	Y	X
AB 415,56	269°58'40"	±	0,00	+ 3 700 000,00	
BC 424,80	359 59 00	A	32 251,64	+ 62 097,09	
CD 246,03	89 58 10	B	31 838,08	+ 62 096,92	
DE 209,74	0 08 00	C	31 835,95	+ 62 521,72	
EF 189,74	90 05 40	D	32 081,98	+ 62 521,95	
FG 210,47	180 04 00	E	32 082,35	+ 62 731,59	
GH 20,04	269 41 10	F	32 272,09	+ 62 731,28	
HA 423,61	180 01 20	G	32 271,85	+ 62 520,81	
Servitude Data:					
jK 179,61	180 39 10	H	32 251,81	+ 62 520,70	
Beacon Description:					
A20mm round iron peg					
B C D E F G H J20mm round iron peg in cairn					
K25mm round iron peg in cairn					
Service Note:					
The broken line KJ represents the Eastern side of a Servitude Right of Way, 29,09m wide, over the Remainder.					
The figure A B C D E F G H of land, being represents 21,6399 Hectares of land, being Portion 61, a portion of Ptn 1, of the Farm DRIFT SANDS No. 544 situate in the Province of Cape of Good Hope, Administrative District of CAPE Surveved in May 1991, by me, J.G.O. Bree Professional Land Surveyor					
This diagram is annexed to No. T 68969/1996 dated 1/10 Registrar of Deeds		The original diagram is No. 8168/70 amended to Transfer/Grant No. 1972. •22/4		File No. Cape 544 S.R. No. 2 1383/91 Comp. BHSY-34 (M1303) BHSY-3441 (N4586)	

GRATIS



VDK VAN DER MERWE DUXBURY & KIRKWOOD
Professional Land Surveyors CA544-1

OFFICE COPY

SIDES Metres	ANGLES OF DIRECTION	CO-ORDINATES Y System Lo19°			
		Constants	±	0,00 +3700000,00	
AB 160,00	271 40 00	A	+	32220,04	+ 63666,28
BC 621,07	1 40 00	B	+	32080,11	+ 63670,93
CD 589,76	115 10 00	C	+	32078,17	+ 64291,74
DA 542,19	226 17 20	D	+	32811,95	+ 64040,94

S.G. No.

2042-94

Approved

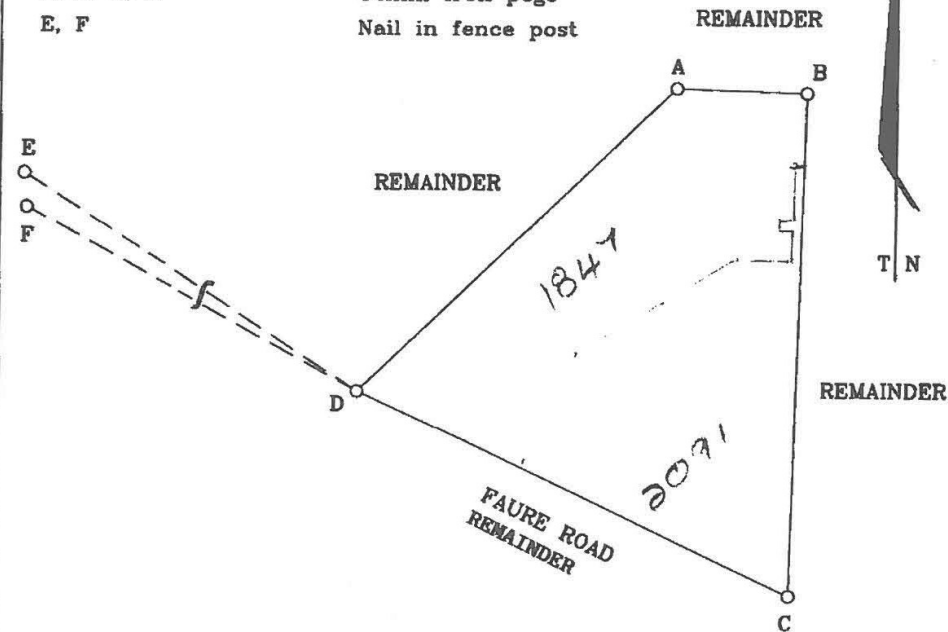
for Surveyor-General

1996.02.14

CONNECTIONS					
DE	1497,00	122 39 10	E	+ 33872,35	+ 63233,24
DF	1589,02	118 31 34	F	+ 34008,07	+ 63282,09
	3418/166	RONDEN	Δ	+ 33145,51	+ 66952,16
	3418/219	DRIFTSANDS	Δ	+ 30726,60	+ 65008,85

Beacon Descriptions:

- A, B, C, D 12mm iron pegs
- E, F Nail in fence post



Scale 1:7500

The figure A B C D

represents 19,8824 Hectares of land, being

PORTION 64, A PORTION OF PORTION 1 OF THE FARM DRIFT SANDS NO 544

situate in the

Administrative District of Cape

Western Cape Province of Cape of Good Hope.

Surveyed in October 1992 - March 1994 by me.

PLS 0871 A.J. VAN WYK Professional Land Surveyor

This diagram is annexed to No. dated T5634/99 i.f.o

The original diagram is No. 8168/70 annexed to GRANT No. 224/72

File No S/14572 Cape 544 S.R. No E726/94 Comp. AHND-11(M1744) AHND-12(M1983)

FOR ENDORSEMENTS SEE BACK OF DIAGRAM

544/64

544-83

CERTIFIED COPY FOR REGISTRATION
 BY SURVEYOR GENERAL
 24 OCT 2014

SIDES metres	ANGLES OF DIRECTION	CO-ORDINATES		SG No.	
		Y System: WG 19 ^o	X		
		Constants	0,00	+3 700 000,00	
A B	586,22	265 54 20	A	+32 498,66	+62 259,00
B C	179,59	0 39 10	B	+31 913,94	+62 217,15
C D	465,04	89 58 40	C	+31 915,97	+62 396,72
D E	365,43	24 50 30	D	+32 381,02	+62 396,90
E F	271,04	350 50 10	E	+32 534,54	+62 728,52
F G	467,09	2 29 00	F	+32 491,38	+62 996,10
G H	98,50	90 00 00	G	+32 511,61	+63 462,76
H J	354,14	177 23 40	H	+32 610,10	+63 462,76
J K	476,00	112 37 30	J	+32 626,21	+63 108,98
K L	97,88	220 21 30	K	+33 065,58	+62 925,87
L M	400,27	220 22 20	L	+33 002,20	+62 851,29
M N	33,84	229 20 30	M	+32 742,93	+62 546,33
N P	149,69	220 42 20	N	+32 717,25	+62 524,29
P Q	39,94	211 16 20	P	+32 619,63	+62 410,81
Q A	154,59	220 25 30	Q	+32 598,90	+62 376,68
44DC23			⊕	+32 992,41	+62 768,41
37DC24			⊕	+30 913,81	+61 539,54

approved
Koller
 for
 SURVEYOR-
 GENERAL
 24/10/2014
 SHEET 1 OF 2 SHEETS

SERVITUDE NOTES:

1. The line B C represents the eastern boundary of a servitude right of way 25,09m wide. Vide SG Diagram No. 4251/91. D/T68969/1996
2. The line t s u represents the southern boundary of a 12m wide pipeline servitude vide SG Diagram No. 1291/1989.
3. The line v w represents the centre line of an electric power transmission servitude vide SG Diagram No. 8203/1978, D/S K517/1979 .


EXEMPT FROM PROVISIONS OF ACT
 70 OF 1970
 1(c)
 SECTION

The figure A B C D E F G H J K L M N P Q represents 39,4892 Hectares of land being,

PORTION 83 (a portion of Portion 1) OF THE FARM DRIFT SANDS No.544

situate in the Administrative District of Cape Province of the Western Cape

Surveyed in
January 2014 by me


 M.E Jakins
 Professional Land Surveyor (PLS0865)

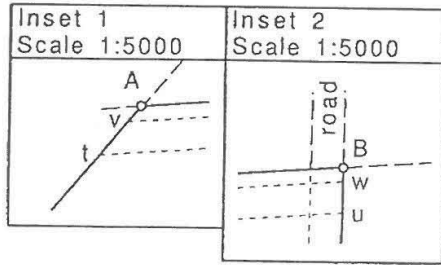
EXEMPT FROM PROVISIONS OF CHAPTER III OF ORD. 15/1985
 - State Purposes

This Diagram is annexed to No. d.d. i.f.o.	The original diagram is S.G. No. 8168/1970 annexed to D/G 224/1972	File: Cape 544 V4 S.R. No. 1065/2014 Comp (M4586), (M1303) (M1297) LPI C0160000
--	--	--

544-83

REV 1

CERTIFIED COPY FOR REGISTRATION
 FOR SURVEYOR-GENERAL
 DATE 24 OCT 2014

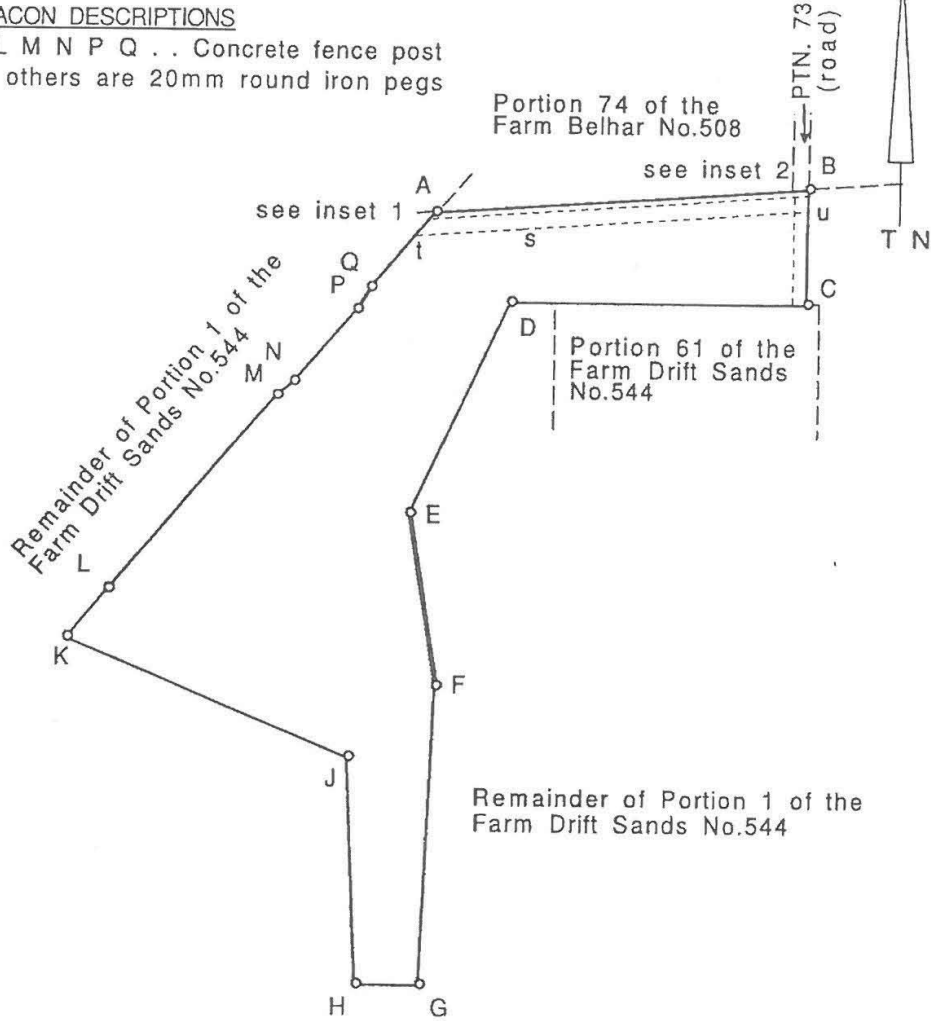


SG No.
 2101/2014
 approved
Koller
 for
 SURVEYOR-
 GENERAL
 24/10/2014

SHEET 2 OF 2 SHEETS

BEACON DESCRIPTIONS

K L M N P Q . . Concrete fence post
 All others are 20mm round iron pegs



Scale: 1/ 10000

**PORTION 83 (a portion of Portion 1) OF THE FARM
 DRIFT SANDS No.544**

situate in the Administrative District of Cape
 Province of the Western Cape

Surveyed in
 January 2014 by me

M.E Jakins
 M.E Jakins

Professional Land Surveyor (PLS0865)

544-84

REV 1

CERTIFIED COPY FOR REGISTRATION
 FOR SURVEYOR-GENERAL
 24 OCT 2014

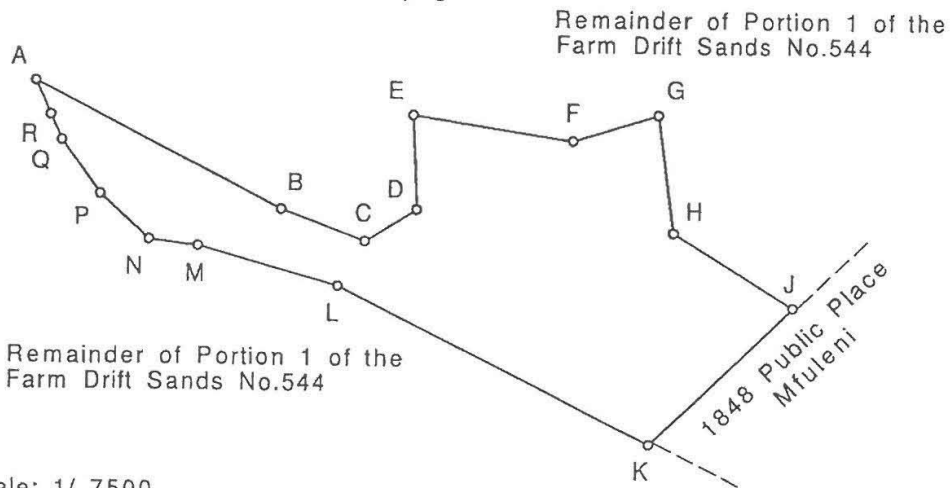
SIDES metres	ANGLES OF DIRECTION	CO-ORDINATES		SG No.
		Y System: WG 19 ⁸⁴	X	
		Constants	0,00	2102/2014 approved
			+3 700 000,00	<i>Moller</i>
A B	322,84 297 11 30	A	+33 393,68	+63 923,24
B C	104,34 290 12 20	B	+33 106,52	+64 070,77
C D	70,49 238 05 50	C	+33 008,60	+64 106,81
D E	110,28 177 16 20	D	+32 948,76	+64 069,56
E F	189,13 278 30 50	E	+32 954,00	+63 959,40
F G	104,58 252 56 30	F	+32 766,95	+63 987,40
G H	138,12 352 07 40	G	+32 666,97	+63 956,73
H J	166,09 301 07 00	H	+32 648,06	+64 093,55
J K	233,48 46 17 10	J	+32 505,87	+64 179,38
K L	407,85 116 27 10	K	+32 674,62	+64 340,73
L M	169,64 105 23 50	L	+33 039,77	+64 159,05
M N	57,42 97 12 00	M	+33 203,32	+64 114,01
N P	77,09 132 37 10	N	+33 260,30	+64 106,81
P Q	77,46 144 05 10	P	+33 317,03	+64 054,61
Q R	32,08 155 29 10	Q	+33 362,46	+63 991,88
R A	43,32 155 35 20	R	+33 375,77	+63 962,69
44DC23		⊕	+32 992,41	+62 768,41
37DC24		⊕	+30 913,81	+61 539,54

for SURVEYOR-GENERAL
24/10/2014



BEACON DESCRIPTIONS

A L M N P Q R . . Concrete fence post
All others are 20mm round iron pegs



Scale: 1/ 7500

The figure A B C D E F G H J K L M N P Q R represents 14,2917 Hectares of land being,

PORTION 84 (a portion of Portion 1) OF THE FARM DRIFT SANDS No.544

situate in the Administrative District of Cape Province of the Western Cape

Surveyed in January 2014 by me

M.E Jakins
M.E Jakins
Professional Land Surveyor (PLS0865)

EXEMPT FROM PROVISIONS OF ACT 70 OF 1970
 SECTION 1(C.C.)

EXEMPT FROM PROVISIONS OF CHAPTER III OF ORD. 15/1985
 State Purposes

This Diagram is annexed to No. d.d. i.f.o.

The original diagram is S.G. No. 8168/1970 annexed to D/G 224/1972

File: Cape 544 V4
S.R. No. 1065/2014
Comp AHND-11(M1744)
BH-33(M2197)
LPI C0160000

544-85

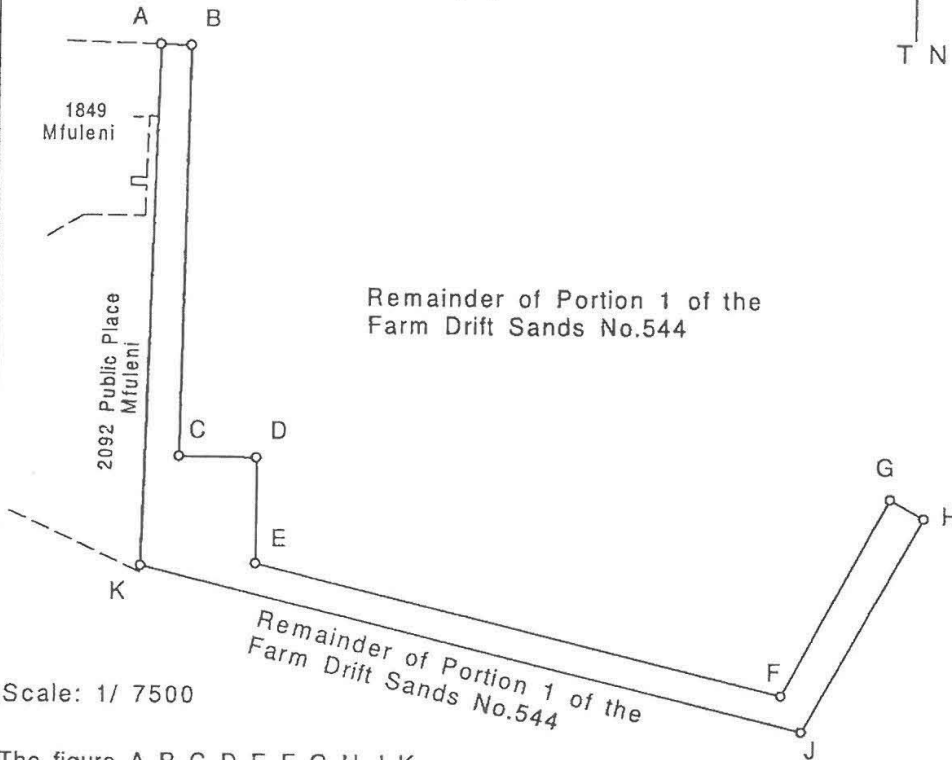
REV 1

SIDES metres	ANGLES OF DIRECTION	CO-ORDINATES Y System: WG 19° X		SG No. 2103/2014 approved <i>Koller</i> for SURVEYOR- GENERAL 24-10-2014	
		Constants	0,00 +3 700 000,00		
A B	34,98	271 41 00	A	+32 122,89	+63 970,74
B C	479,54	1 04 30	B	+32 087,92	+63 971,77
C D	90,83	270 30 30	C	+32 096,92	+64 451,23
D E	124,09	359 59 20	D	+32 006,10	+64 452,03
E F	633,68	283 30 40	E	+32 006,08	+64 576,12
F G	263,63	208 53 40	F	+31 389,94	+64 724,18
G H	45,43	298 52 50	G	+31 262,55	+64 493,37
H J	288,38	29 30 00	H	+31 222,77	+64 515,31
J K	797,85	103 30 50	J	+31 364,77	+64 766,30
K A	609,38	181 39 30	K	+32 140,53	+64 579,87
44DC23			⊕	+32 992,41	+62 768,41
37DC24			⊕	+30 913,81	+61 539,54

CERTIFIED COPY FOR REGISTRATION
 24 OCT 2014
 2014-10-24

BEACON DESCRIPTIONS

All beacons are 20mm round iron pegs.



Scale: 1/ 7500

The figure A B C D E F G H J K represents 7,1974 Hectares of land being,

PORTION 85 (a portion of Portion 1) OF THE FARM DRIFT SANDS No.544

situate in the Administrative District of Cape Province of the Western Cape

Surveyed in January 2014 by me

M.E Jakins
M.E Jakins
Professional Land Surveyor (PLS0865)

This Diagram is annexed to No. d.d. i.f.o.	The original diagram is S.G. No. 8168/1970 annexed to D/G 224/1972	File: Cape 544 V4 S.R. No.1065/2014 Comp AHND-12(M1983) LPI C0160000
--	--	---

EXEMPT FROM PROVISIONS OF ACT 70 OF 1970
 SECTION I.C.S.

EXEMPT FROM PROVISIONS OF CHAPTER III OF ORD. 15/1985
 State Purposes

544-86

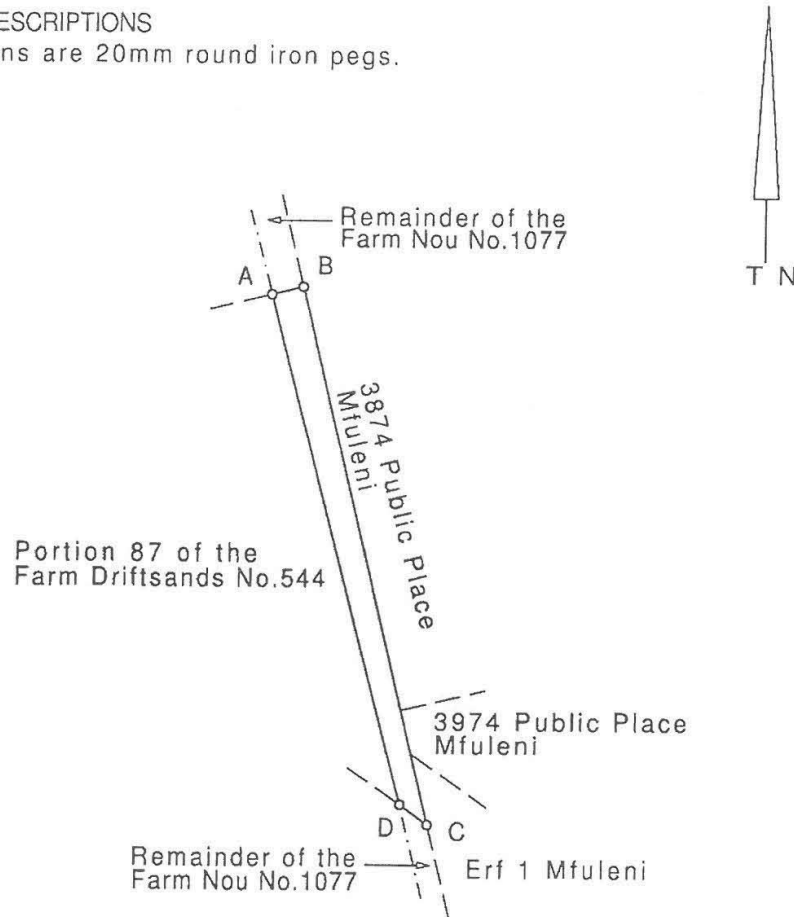
REV 1

CERTIFIED COPY FOR REGISTRATION
 24 OCT 2014

SIDES metres		ANGLES OF DIRECTION		CO-ORDINATES Y System: WG 19° X		SG No. 2104/2014 approved <i>Koller</i> for SURVEYOR-GENERAL 24-10-2014
				Constants	0,00	
A B	25,03	256 28 30	A	+30 649,05		+63 743,02
B C	431,03	346 28 20	B	+30 624,71		+63 737,17
C D	26,50	125 05 00	C	+30 523,88		+64 156,23
D A	411,22	165 25 30	D	+30 545,57		+64 141,00
44DC23			⊖	+32 992,41		+62 768,41
37DC24			⊕	+30 913,81		+61 539,54

BEACON DESCRIPTIONS

All beacons are 20mm round iron pegs.



Scale: 1/ 5000

The figure A B C D represents 8923 square metres of land being,

FARM No.1548

situate in the Administrative District of Cape Province of the Western Cape

Surveyed in January 2014 by me

M.E Jakins
 Professional Land Surveyor (PLS0865)

This Diagram is annexed to No. d.d. i.f.o.	The original diagram is S.G. No. 8X67/1970 annexed to D/G 224/1972	File: Cape 1548 S.R. No.1065/2014
		Comp AHND-12(M1983) LPI C0160000

544-87

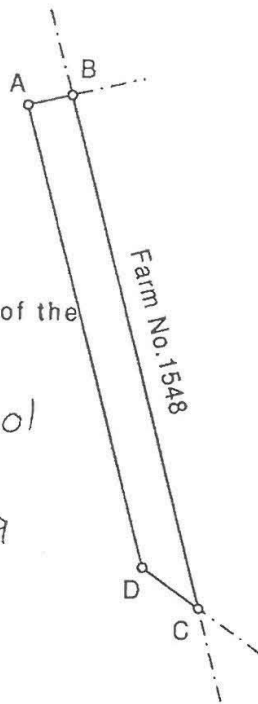
REV 1

CERTIFIED COPY FOR REGISTRATION
 FOR SURVEYOR GENERAL
Zake
 24 OCT 2014

SIDES metres	ANGLES OF DIRECTION	CO-ORDINATES Y System: WG 19° X		SG No. 2105/2014 approved <i>Koller</i> for SURVEYOR- GENERAL 24-10-2014
		Constants	0,00 +3 700 000,00	
A B	35,20 256 28 30	A	+30 683,28 +63 751,26	
B C	411,22 345 25 30	B	+30 649,05 +63 743,02	
C D	54,58 125 15 40	C	+30 545,57 +64 141,00	
D A	370,15 165 25 30	D	+30 590,13 +64 109,50	
44DC23		⊕	+32 992,41 +62 768,92	
37DC24		⊕	+30 913,81 +61 539,54	

BEACON DESCRIPTIONS

All beacons are 20mm round iron pegs



Remainder of Portion 1 of the Farm Drift Sands No.544

*Included in Consol
Dgm 2106 / 2014
Farm No. 1549*

Scale: 1/ 5000

The figure A B C D represents 1,3752 Hectares of land being, **PORTION 87 (a portion of Portion 1) OF THE FARM DRIFT SANDS No.544**

situate in Administrative District of Cape Province of the Western Cape

Surveyed in January 2014 by me

M.E Jakins
Professional Land Surveyor (PLS0865)

EXEMPT FROM PROVISIONS OF ACT
 70 OF 1970
 SECTION (C.C.)

EXEMPT FROM PROVISIONS OF
 CHAPTER III OF ORD. 15/1985
 State Purposes

This Diagram is annexed to No. d.d. i.f.o.	The original diagram is S.G. No. 8167/1970 annexed to D/G 224/1972	File:Cpe 544 V4 S.R. No. 1065/2014 Comp AHND-123(M1983) LPI C010000
--	--	--

544-88

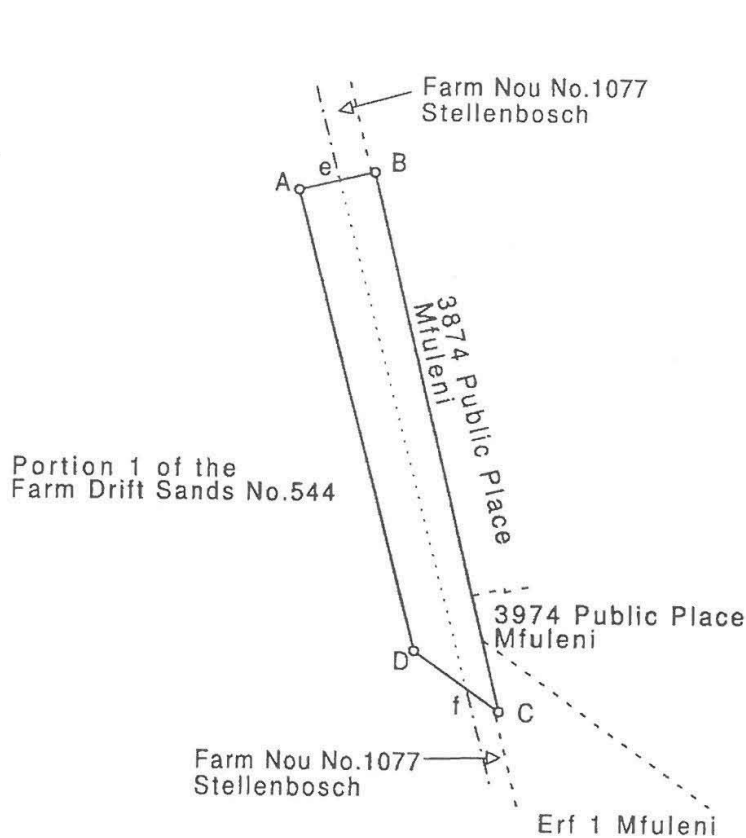
REV 1

CERTIFIED COPY FOR REGISTRATION
 FOR SURVEYOR-GENERAL
Bozika
 24 OCT 2014

COMPONENTS

1. The figure A e f D represents Portion 87 of the Farm Drift Sands No.544. Vide Diagram SG No.2105/2014
2. The figure e B C f represents Farm No.1548. Vide Diagram SG No.2104/2014

SG No.
 2106/2014
 approved
Kolfer
 for
 SURVEYOR-
 GENERAL
 24/10/2014



Scale: 1/ 5000

Then figure A B C D represents 2,2675 Hectares of land being,

FARM No.1549

and comprises components 1 and 2 as listed above, situate in the Administrative District of Cape Province of the Western Cape

Compiled in July 2014 by me

M.E Jakins
Professional Land Surveyor

This Diagram is annexed to No.	The original diagrams are as listed above.	File: Cape 544 V4 S.R. No.Compiled
Registrar of Deeds		Comp AHND-12(M1983) LPI C0160000

SYE Meer	RISTINGS HOEKKE	Y	KOORDINATE Meer 1019	X
AB	2988,73	Konstante	30,000	+3.760,000
BC	570,65	A	+999,70	+1895,63
CD	727,93	B	+247,56	+4748,17
DE	2203,66	C	+809,10	+4626,56
EF	736,04	D	+570,80	+5315,75
FG	709,49	E	+2498,06	+4247,20
GH	164,34	F	+2708,25	+4139,79
HJ	137,94	G	+3349,72	+3839,00
IK	566,03	H	+3902,79	+3779,19
KL	660,56	J	+4391,59	+3916,67
LM	759,35	K	+4054,79	+3973,17
MN	443,83	L	+4121,84	+3516,02
NP	512,58	M	+4877,43	+3391,55
PQ	232,44	N	+5029,76	+2974,68
QR	87,06	O	+4349,21	+3192,41
RS	86,95	P	+5655,72	+3276,98
ST	86,99	Q	+4265,63	+3201,35
TU	83,20	R	+4179,14	+3310,35
UV	907,75	S	+4092,39	+3283,12
WX	1156,26	T	+4011,83	+2840,61
XY	618,57	U	+3219,24	+2961,46
YA	893,76	V	+2468,22	+1917,34
		X	+1851,23	

BAKERS:
 A : 10mm. Ronde yster pen.
 B,D,V,W : 20mm. Ronde yster pen.
 C : 15mm. Ronde yster pen.
 E,F,D,H : 15mm. Ronde yster pen in cement.
 J : 10mm. yster pyp in gemesselde klipstapel.
 K : Ligte spoortseef in gemesselde klipstapel.
 L : Geen bakke.
 M : 12mm. Ronde yster pen in teerpad.
 N : 40mm. yster pyp 20cm. hoog.
 P,Q,R,S,T : 12mm. Ronde yster pen lankse ronde hout
 kroepaal in beton.
 U : 12mm. Ronde yster pen in cement.
 X : Keël.

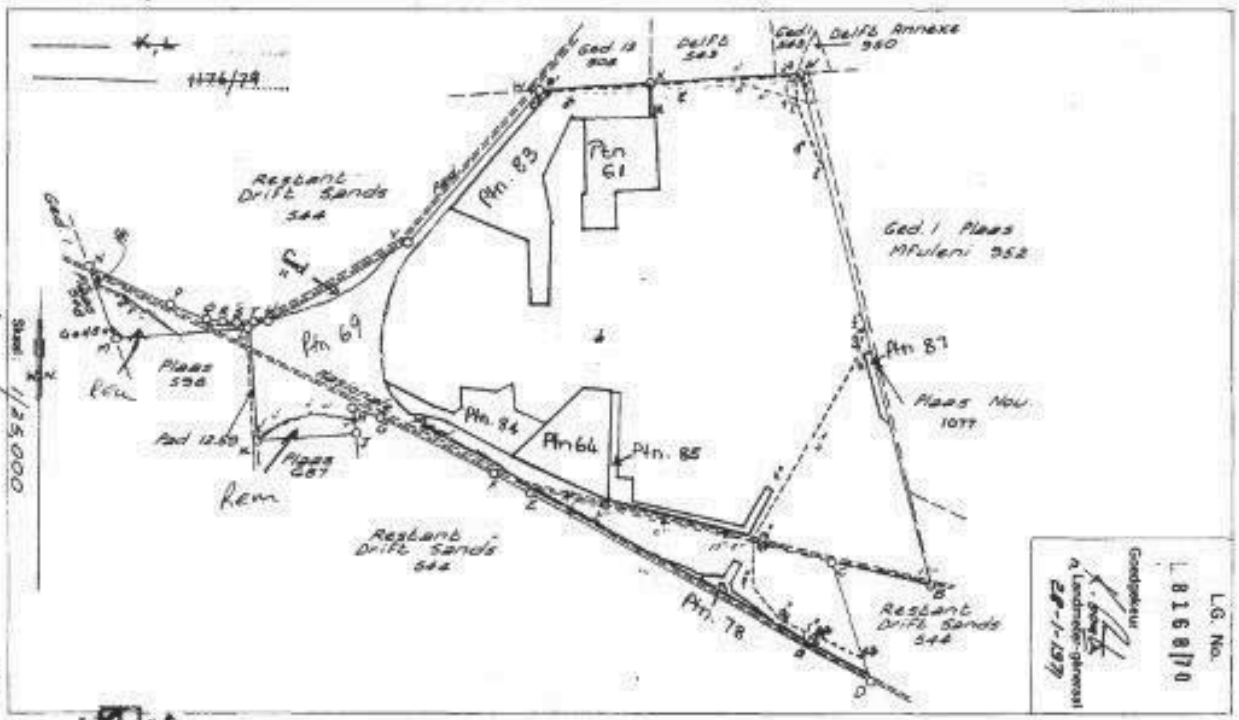
Die figur A B C D E F G H J K L N P Q R S T U V W X
 sei voor 736,8596 Hektar
GEDELT 1 VAN DIE PLAAS DRIET SANDS NO. 544
 grond swede
 geleer in
 van die Kaap.
 Opgevoert in Julie - September 1970
 deur my.

Administratiewe Distrik
 Provinsie Kaap de Gode Hoop.

Landrester
 Lier No. S/14572
 M.S. No. E.2099/70

Landrester
 M.S. No. E.2099/70
 Komp. 311-066C-1
 311-066C-2
 311-066C-3
 311-066C-4
 311-066C-5
 311-066C-6
 311-066C-7
 311-066C-8
 311-066C-9
 311-066C-10
 311-066C-11
 311-066C-12
 311-066C-13
 311-066C-14
 311-066C-15
 311-066C-16
 311-066C-17
 311-066C-18
 311-066C-19
 311-066C-20
 311-066C-21
 311-066C-22
 311-066C-23
 311-066C-24
 311-066C-25
 311-066C-26
 311-066C-27
 311-066C-28
 311-066C-29
 311-066C-30
 311-066C-31
 311-066C-32
 311-066C-33
 311-066C-34
 311-066C-35
 311-066C-36
 311-066C-37
 311-066C-38
 311-066C-39
 311-066C-40
 311-066C-41
 311-066C-42
 311-066C-43
 311-066C-44
 311-066C-45
 311-066C-46
 311-066C-47
 311-066C-48
 311-066C-49
 311-066C-50
 311-066C-51
 311-066C-52
 311-066C-53
 311-066C-54
 311-066C-55
 311-066C-56
 311-066C-57
 311-066C-58
 311-066C-59
 311-066C-60
 311-066C-61
 311-066C-62
 311-066C-63
 311-066C-64
 311-066C-65
 311-066C-66
 311-066C-67
 311-066C-68
 311-066C-69
 311-066C-70
 311-066C-71
 311-066C-72
 311-066C-73
 311-066C-74
 311-066C-75
 311-066C-76
 311-066C-77
 311-066C-78
 311-066C-79
 311-066C-80
 311-066C-81
 311-066C-82
 311-066C-83
 311-066C-84
 311-066C-85
 311-066C-86
 311-066C-87
 311-066C-88
 311-066C-89
 311-066C-90
 311-066C-91
 311-066C-92
 311-066C-93
 311-066C-94
 311-066C-95
 311-066C-96
 311-066C-97
 311-066C-98
 311-066C-99
 311-066C-100

GRATIS



VDK VAN DER MERWE DUXBURY & KIRKWOOD
Professional Land Surveyors CA544-1

OFFICE COPY

SIDES Metres	ANGLES OF DIRECTION	CO-ORDINATES			S.G. No.
		Y	System	X	
	Constants	±	0,00	+3700000,00	2043-94
AB	160,00	271 40 00	A +	32220,04	+ 63666,28
BC	88,00	1 40 00	B +	32060,11	+ 63670,93
CD	10,00	91 40 00	C +	32062,67	+ 63758,90
DE	72,00	1 40 00	D +	32072,66	+ 63758,61
EF	18,00	91 40 00	E +	32074,76	+ 63830,58
FG	9,00	1 40 00	F +	32092,75	+ 63830,05
GH	18,00	271 40 00	G +	32093,01	+ 63839,05
HJ	36,00	1 40 00	H +	32075,02	+ 63839,57
JK	65,43	91 40 00	J +	32076,07	+ 63875,56
KL	7,44	79 03 50	K +	32141,47	+ 63873,65
LM	228,69	59 10 00	L +	32148,78	+ 63875,07
MN	5,88	65 13 00	M +	32345,15	+ 63992,28
NP	153,00	25 10 00	N +	32350,49	+ 63994,75
PQ	217,00	115 10 00	P +	32415,55	+ 64133,22
QA	542,19	226 17 20	Q +	32611,95	+ 64040,94
3318/166 Ronden			Δ +	33145,51	+ 66952,16
3418/219 Driftsands			Δ +	30726,60	+ 65008,85

Approved
R.A.F.
for Surveyor-General
1996.02.14

SHEET 1
OF 2 SHEETS

The figure A B C D E F G H J K L M N P Q

represents 10,5533 Hectares of land, being

ERF 1847 MFULENI

situate in the

Administrative District of Cape Stellenbosch Western Cape Province of Cape of Good Hope

Surveyed in October 1992 - March 1994

by me, *A.J. van Wyk*
PLS 0871 A.J. VAN WYK Professional Land Surveyor

This diagram is annexed to No. dated T5635/99 i.f.o	The original diagram is No. 2042/1994 annexed to Transfer No. 1999-5634 (pin 64 of the farm No 544)	File No. Cape 544 S.R. No E726/94 Comp.AHND-11 (M1744) AHND-12 (M1983)
		LPI C0670026

S
B

VDK VAN DER MERWE DUXBURY & KIRKWOOD
Professional Land Surveyors CA544-1

OFFICE COPY

ERF 1847 MFULENI

S.G. No.

2043-94

Approved

R.A.T.

Surveyor-General

1996.02.14

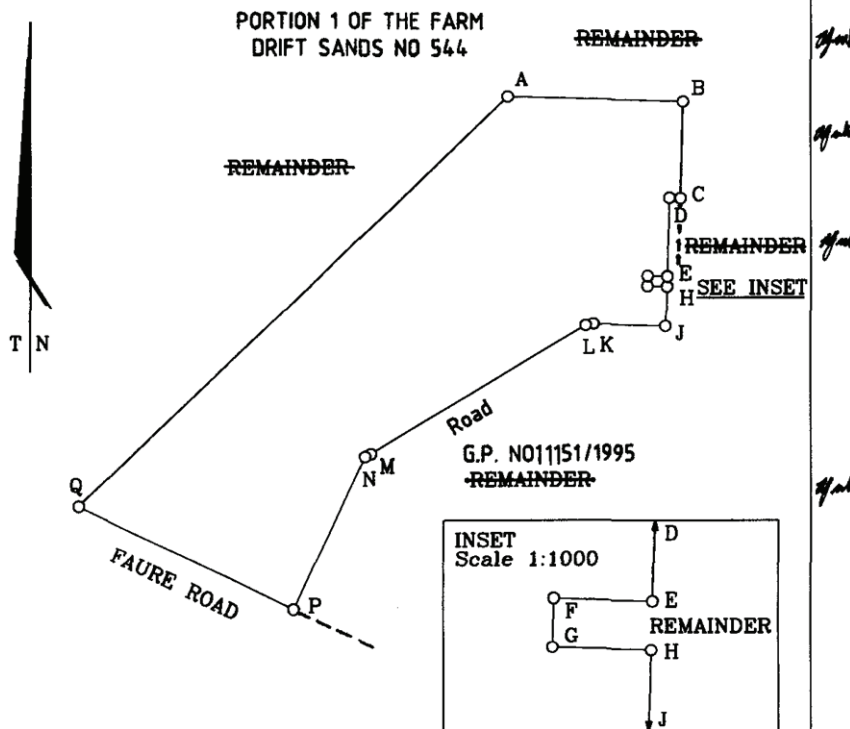
FOR SUBDIVISIONS
OF THIS PROPERTY
VIDE GENERAL PLAN
NO 2044/1994.

SHEET 2

OF 2 SHEETS

BEACON DESCRIPTIONS:

A, B, C, D, E, F, G, H, J, K, L, M, N, P, Q 12mm iron peg



Surveyed in October 1992 - March 1994
by me

A.J. Van Wyk
A.J. VAN WYK
Professional Land Surveyor
PLS 0871

B

SCALE 1:5000

1847

VDK VAN DER MERWE DUXBURY & KIRKWOOD
Professional Land Surveyors CA544/1.2

OFFICE COPY

SIDES Metres	ANGLES OF DIRECTION	CO-ORDINATES		
		Y	System	X
	Constants	±	0,00	+3700000,00
AB 10,00	271 40 00	A +	32072,66	+ 63758,61
BC 533,07	1 40 00	B +	32062,67	+ 63758,90
CD 372,76	115 10 00	C +	32078,17	+ 64291,74
DE 153,00	205 10 00	D +	32415,55	+ 64133,22
EF 5,88	245 13 00	E +	32350,49	+ 63994,75
FG 228,69	239 10 00	F +	32345,15	+ 63992,28
GH 7,44	259 03 50	G +	32148,78	+ 63875,07
HJ 65,43	271 40 00	H +	32141,47	+ 63873,65
JK 36,00	181 40 00	J +	32076,07	+ 63875,56
KL 18,00	91 40 00	K +	32075,02	+ 63839,57
LM 9,00	181 40 00	L +	32093,01	+ 63839,05
MN 18,00	271 40 00	M +	32092,75	+ 63830,05
NA 72,00	181 40 00	N +	32074,76	+ 63830,58
3418/166 Ronden		Δ +	33145,51	+ 66952,16
3418/219 Driftsands		Δ +	30726,60	+ 65008,85

S.G. No.
11150/1995
Approved
R.A.F.
for Surveyor-General
1996.02.14

SHEET 1
OF 2 SHEETS

BEACON DESCRIPTIONS:

A, B, C, D, E, F, G, H, J, K, L, M, N 12mm iron peg

The figure A B C D E F G H J K L M N

represents 9,3291 hectares of land, being

ERF 2091 MFULENI

situate in the **Stellenbosch** Western Cape
Administrative District of ~~Cape~~ Province of ~~Cape of Good Hope~~.

Surveyed between October 1992 and November 1994 *A.J. van Wyk*
by me, **A.J. VAN WYK**
Professional Land Surveyor PLS 0871

This diagram is annexed to No. dated <i>T5635/99</i> i.f.o	The original diagram is No. 2042/94 annexed to Transfer 1999- -5634	File No. <i>5/ Cape 544</i> S.R. No <i>LC 3553/95</i> Comp.AHND-11 (M1744) AHND-12 (M1983)
	No. <i>(Ptn 64 of the farm No 544)</i>	LPI C0670026

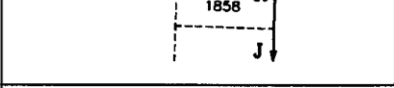
S
B

2091 H

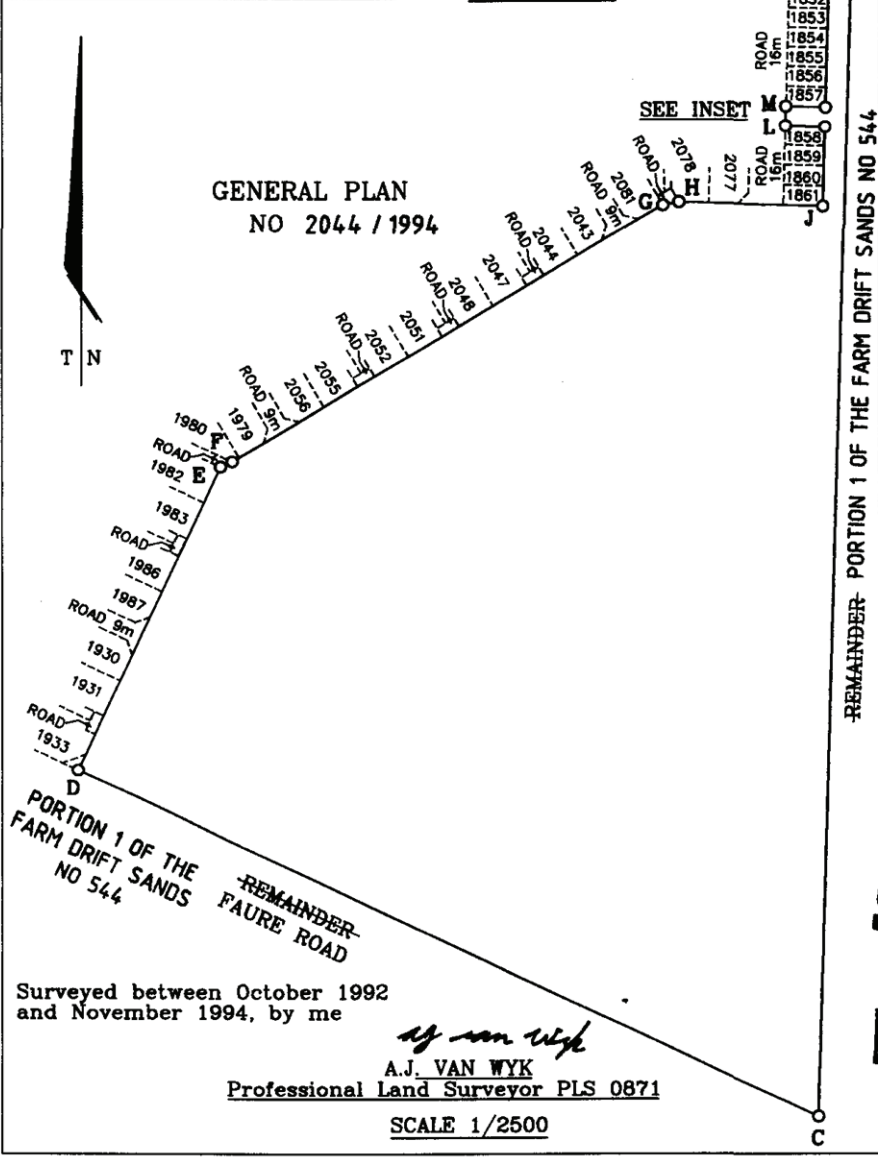
VDK VAN DER MERWE DUXBURY & KIRKWOOD
Professional Land Surveyors CA544-1.2

OFFICE COPY

ERF 2091 MFULENI		S.G. No. 11150/1995
FOR SUBDIVISIONS OF THIS PROPERTY VIDE GENERAL PLAN NO 11151/1995.		Approved <i>RAT</i> Surveyor-General 1996.02.14



SHEET 2
OF 2 SHEETS



2091

